



MILES ESTATE AGENTS

33 Darby Way Bishops Lydeard
Taunton TA4 3BB £245,000



A good size 3 double bedroom terraced house set in large gardens overlooking the Green in this popular location on the edge of Bishops Lydeard close to the wonderful Quantock Hills, within Kingsmead catchment area. Spacious kitchen/dining room, lean to conservatory, utility and off road parking. Early viewing recommended and NO ONWARD CHAIN. Freehold Council Tax Band B EPC : D.



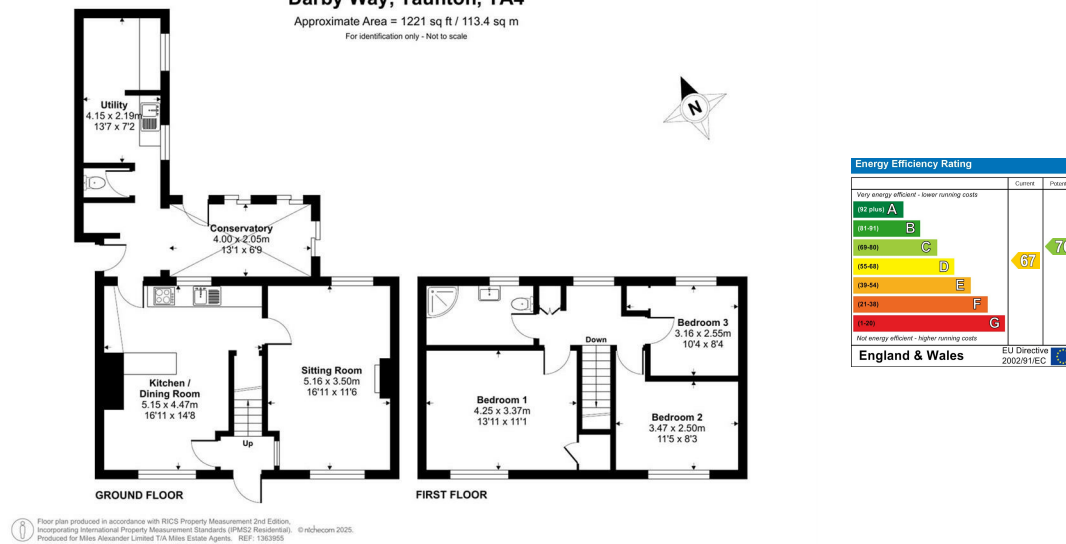


Features:

- Entrance with stairs to 1st floor
- Good size kitchen/dining room
- Spacious sitting room
- Lean to conservatory
- Useful utility room
- Cloakroom
- 3 double bedrooms
- Shower room
- Large enclosed and productive garden
- Off road parking for 2 cars
- NO ONWARD CHAIN
- Council Tax Band B
- Freehold
- EPC : D



Darby Way, Taunton, TA4
Approximate Area = 1221 sq ft / 113.4 sq m
For identification only - Not to scale



Viewings strictly through the selling agents:

Miles Estate Agents

2 Piffin Lane, Bishops Lydeard, Taunton,
Somerset, TA4 3AS

Tel: 01823 470 500

lydeard@milesestateagents.co.uk

www.milesestateagents.co.uk

rightmove

OnTheMarket.com

MILES ESTATE AGENTS



BEST

ESTATE AGENT GUIDE
2019 : EXCEPTIONAL

SALES